



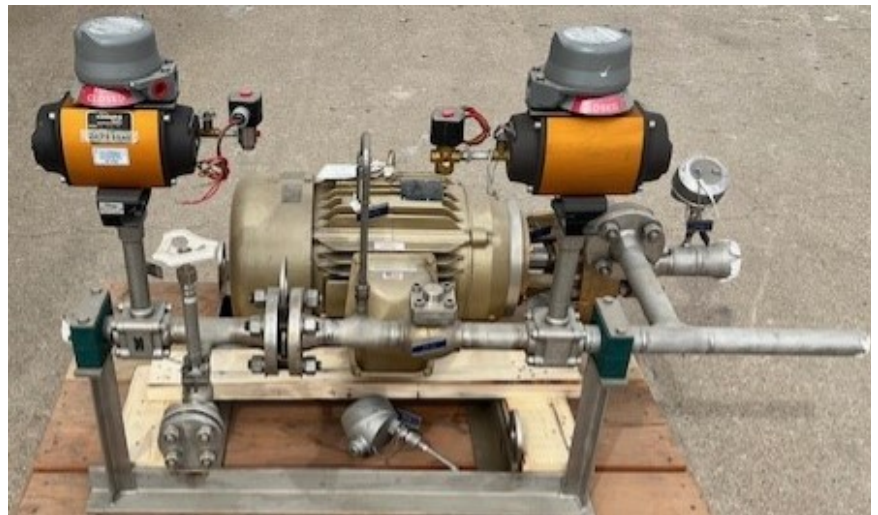
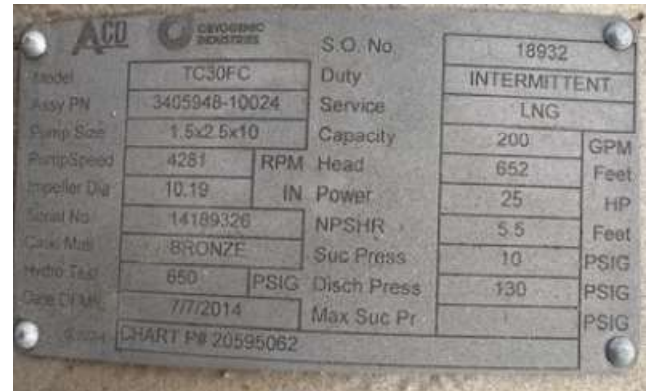
Markey Cryogenic Equipment Co.
 www.markeycryo.com.
 Ph: 888-471-CRYO
 2796
 E-mail kevin@markeycryo.com

ACD TC-30

LNG Centrifugal Ground pump



Manu: ACD
 Model: TC-30
 Fluid: LNG
 Flow: 200 GPM
 Volts: 230 / 460
 Amps 66 / 33
 RPM 3,520
 HP 30





Santa Ana, California, U.S.A.
 Lubrication Schedule

ACD CRYOGENIC INDUSTRIES

S.O.#	18932		
Grease Type	Mobil 28		
	Drive End		Fan End
Quantity	0.6 oz		0.4 oz
	17.7 mL		11.8 mL
Lubrication Interval	2000		hours

55039

3405948 - 10024

TC-30 PUMP ASSY

VEND#: _____ DATE: 07/11/14

P.O. _____ W.O.#: 478021

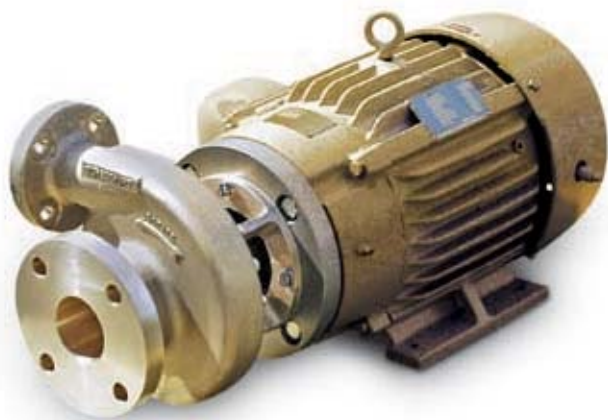
QTY 1 S/N 18932

MATL _____ INSP FE



MODEL AC/TC-30

CLOSE COUPLED PUMP



SPECIFICATIONS

Flow Range	gpm	16 – 630
	lpm	60 – 2,350
NPSHR	feet	2 – 12
	meter	0.6 – 4
Differential Head	feet	20 – 700
	meter	6 – 210
Pump Design Rating	hp	3 – 100
	kw	2.2 – 75
Speed Range	rpm	1,450 – 7,200

Consult ACD engineering for actual performance ratings.



FEATURES & BENEFITS

- Close coupled design provides:
 - Operations at high efficiencies
 - Fewer moving parts
 - Lower maintenance costs
- Shaft seal design (mechanical, gas riding or labyrinth) are state-of-the-art and prolong life without leakage
- VFD compatibility allows for multiple operating speeds
- Minimum recirculation wear rings reduce maintenance requirements and improve efficiencies

APPLICATIONS

- Liquid storage transfer
- Process plant
- Truck and trailer off-loading
- Tank car unloading

LIQUIDS PUMPED

- Nitrogen
- Oxygen
- Argon
- Methane

OPTIONAL ACCESSORIES

- Labyrinth seal (dual, single)
- Gas riding seal
- Pump skid
- Automatic control system
- Purge, seal and recommended spare parts kits

TYPICAL SCOPE OF SUPPLY

- Pump and TEFC electrical motor shown
- Long life CFS mechanical seal
- Motor and seal purge ports

MODEL AC/TC-30



2321 S. Pullman Street
 Santa Ana, CA 92705 USA
 Tel: 800.525.4216 (USA only)
 Tel: +1.949.261.7533
 Fax: +1.949.261.6285
 acd@acdllc.com • acdcllc.com



Gutenbergstrasse 1
 CH-4142 Muenchenstein Switzerland
 Tel: +41.61.413.0230
 Fax: +41.61.413.0233
 sales@acdcrryo.com • acdcrryo.com

GLOBAL SERVICE

NORTH AMERICA

Atlanta
 Atlanta, Georgia, USA
 +1 404.696.8113 • Fax +1 404.696.8116
 sales@cryoatlanta.com • cryoindservice.com

California
 Santa Ana, California, USA
 +1 949.724.8636 • Fax +1 949.724.8636
 sales@cryocal.com • cryoindservice.com

Houston
 Houston, Texas, USA
 +1 281.590.4800 • Fax +1 281.590.4801
 sales@cihouston.com • cryoindservice.com

Pittsburgh
 Imperial, Pennsylvania, USA
 +1 724.695.1910 • Fax +1 724.695.1926
 pittcryo@pittcryogenic.com • cryoindservice.com

Red Deer
 Red Deer, Alberta, Canada
 +1.403.352.4436 • Fax +1.403.352.4439
 sales@cryocanada.com • cryoindservice.com

Toronto
 Toronto, Ontario, Canada
 +1 416.502.1950 • Fax +1 416.502.1952
 info@cryocanada.com • cryoindservice.com

INTERNATIONAL

Australia
 Dandenong, Victoria, Australia
 +61.3.9791.7888 • Fax +61.3.9769.2788
 sales.au@cryoquip.com • cryoquip.com

Brasil
 São Paulo – SP, Brasil
 +55 11 9619.6532 SP
 sales.br@acdcom.com • www.acdcom.com

China
 Hangzhou, China
 +86.571.8869.0788 • Fax +86.571.8869.0715
 hci@mail.hz.zj.cn • cryoindservice.com

Europe
 D-79415 Bad Bellingen Germany
 +49.7635.8105.0 • Fax: +49.7635.8965
 info@acdcrryo.com • acdcrryo.com

India
 Vadodara, Gujarat, India
 +91.265.283.0113 • Fax +91.265.283.0112
 npatel@acdcllc.com • acdcom.com

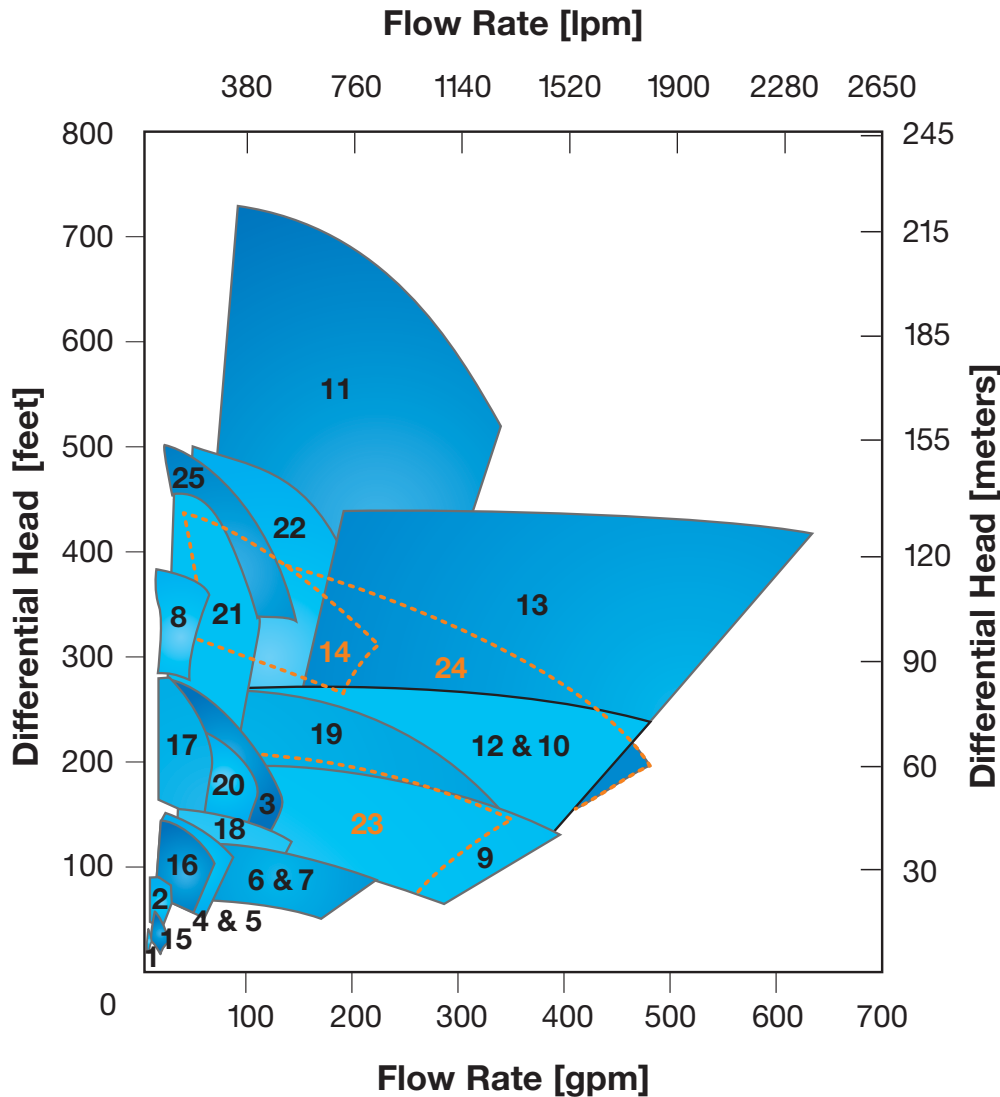
Korea
 Yongin-si, Gyeonggi-do, Korea
 +82.31.286.6114 • Fax +82.31.286.6118
 info@ci-korea.co.kr • cryoindservice.com

Malaysia
 Shah Alam, Selangor D.Ehsan, Malaysia
 +603.5740.8770 • Fax +603.5740.8775
 cryogen@po.jaring.my • cryoindservice.com

Bulletin No. ACD AC/TC30-R2.09

© 2009 ACD LLC, Printed in USA

PUMP PERFORMANCE CURVE



60 HZ performance

MODEL AC	
Pump ID	Pump Size
1	.5x.5x3
2	1x2x4.5
3	1x3x8.5
4	1.5x2.5x6A
5	1.5x3x6
6	2x3x6
7	2x4x6
8	1.5x2.5x7-2SN
9	2x4x8.5
10	3x5x8.5
11	2x4x13
12	3x4x8.5
13	4x5x10.5
14	1.5x3x10.5

MODEL TC	
Pump ID	Pump Size
15	.75x1x4
16	1x2x6
17	1x2x6-2S
18	1.5x2.5x6C
19	2x4x7.37
20	1.5x3x7
21	1.5x3x7-2S
22	1.5x2.5x10
23	2x5x7.37
24	2x4x9
25	1.5x2.5x10N

Contact ACD for proper specific selection.
 Performance are shown at synchronous speed.



Markey Cryogenic Equipment Co.
www.markeycryo.com.
Ph: 888-471-CRYO
2796
E-mail kevin@markeycryo.com

Companion Connection Assemblies for TC-30

(2) 3" LNG-CGA Connectors

Piping Circuit

Gauges

Valves

